



GSE IN-ROOF SYSTEM™

BIPV SYSTEM FOR ALL PHOTOVOLTAIC MODULES

RANGE
2022

QUICK, AESTHETIC, LIGHTWEIGHT,
WATERPROOF AND COST-COMPETITIVE



MADE IN FRANCE

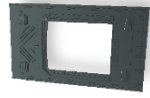
www.gseintegration.com

The GSE IN-ROOF SYSTEM range is expanding

MODULES UP TO 400 Wp 2012 AND 2020 RANGE

MODULES UP TO 600 Wp 2022 RANGE

PORTRAIT:



19 available references*
Module length: 1535 to 1780 mm
Module width: 803 to 1055 mm



21 available references*
Module length: 1554 to 1740 mm
Module width: 768 to 1120 mm

LANDSCAPE:



21 available references*
Module length: 1610 to 1990 mm
Module width: 990 to 1160 mm

UP TO 450 Wp:

UP TO 600 Wp:

Coming early 2023,
new portrait frames for XL PV modules!

* Detailed list available on our website: www.gseintegration.com

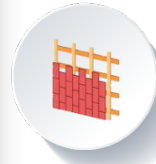
BENEFITS

- Economic: the most competitive system for roof renovations and new constructions
- Easy to install: 10 to 16 panels installed in 6 hours
- Flexible: achieve any desired configuration type (U-Shape, pyramid, etc...)
- Lightweight and space-saving: 58 frames per pallet

PRODUCT CERTIFIED IN MANY COUNTRIES

- Resistance to fire
- Completely waterproof: ensures complete watertightness of the PV system and the roof
- Optimal ventilation
- Impact resistance
- Very important mechanical resistance:
Downward pressure: 5400 Pa (IEC 61215)
Upward pressure: up to 5500 Pa (NF EN 12179)
Eurocode design values: Snow: 1800 Pa, Wind: 1700 Pa

TECHNICAL SPECIFICATIONS



All types
Roof covering



Slope
12° to 60°



Weight
2.8 to 3.7 kg/m²



Temperature range
-30°C to 100°C



Material
PP - Aluminium - Stainless steel
(100% Recyclable)

NEW: EVEN EASIER TO INSTALL

Integration of all new PV modules generations. Until 150 mm of height adjustment possible

Pre-drilled fixing points

Simplified clamps installation: position indication

Optimized cable passaged for all junction boxes

